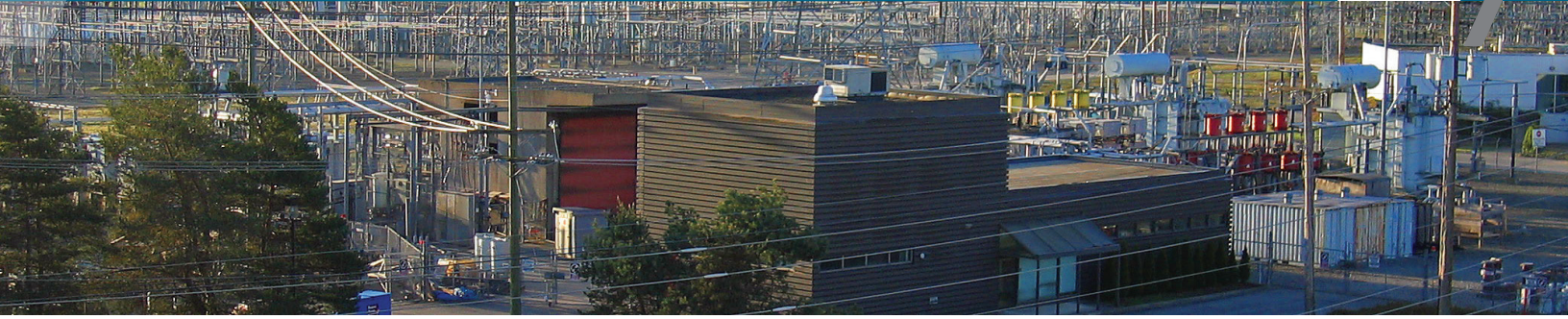


HIGH POWER LABORATORY



FEATURES

- 1000 MVA, 60 Hz short-circuit rating
- Grid-fed test facility, energized from 230 kV transmission system
- Precise adjustment of test voltage, current, power factor and/or asymmetry
- 3-phase banks of series and/or parallel TRV components
- 3-phase bank of load components rated up to 1200 A
- 3-phase circuit breaker for reclosing tests
- Capacitor switching of banks up to 80 MVAR
- ISO 17025 accredited
- STLNA member
- Certification tests to IEC, IEEE, ANSI, ASTM and other national and international standards
- Comprehensive protection, control, measurement and instrumentation systems.
- Digital high speed video systems

TESTING CAPABILITIES

TEST TYPE	1 PHASE	3 PHASE
Maximum Voltage	44.8 kV rms L-g	38.8 kV rms L-L
Maximum Current	100 kA rms	80 kA rms

TESTS PERFORMED

- **Load and Fault Interrupting Tests** on:
 - loadbreak and capacitor switches
 - current limiting, power and expulsion fuses
 - reclosers
 - separable connectors
 - circuit breakers
- **Arcing Tests** on:
 - switchgear
 - insulators
 - arresters
- **Momentary Tests** on:
 - switchgear
 - disconnects
 - switches
 - safety grounds
 - reactors
 - connectors
 - buswork
 - instrument transformers
- **Transformer Short-Circuit Tests**

FOR MORE INFORMATION CONTACT:

Giuseppe Stanciulescu - 604.598.5011

Business Development Specialist

Business Development

giuseppe.stanciulescu@powertechlabs.com

Powertech



powertechlabs.com